

**Yearly Report 2022**

# **Lili's Proto Lab**

Utrecht University, December 2022



**Utrecht  
University**



# Contents

Introduction . . . . .	5
Overview . . . . .	9
Members . . . . .	17
Teaching & Courses . . . . .	21
Events . . . . .	27
Projects . . . . .	35
Supplementary . . . . .	59



# Introduction

## **From an idea to success**

Welcome to the first annual report for Lili's Proto Lab! We are excited to share with you the progress and accomplishments of our maker space and prototyping lab over the past year. 2022 marked the first full year of operation for Lili's Proto Lab, and we are thrilled to have provided a space for the first UU students to explore their creativity and bring their ideas to life.

Throughout the year, our team has worked hard to create a welcoming and inclusive environment for all students to learn, create, and collaborate. We have doubled our team size from our supervisor board (consisting of Pauline Krijgsheld, Lennart Herlaar, and Sanli Faez) to a total of six with Pieter Kooijman (lab manager), Edward Paddon (project acquisition and development), and Jacob Seifert (Ph.D. student teaching assistant).

In this annual report, we will highlight some of the most impressive projects created by our students, as well as share some of the ways

in which Lili's Proto Lab has grown and evolved over the past year. Furthermore, we want to illuminate the first events, workshops and meeting that were held at LPL. After our location has been renovated in early January 2023, we will continue and develop our activities further. We hope that this report will give you a sense of the potential that exists within our maker space and prototyping lab, and that it will inspire you to continue supporting and celebrating the creative and scientific work of our students.





## Overview

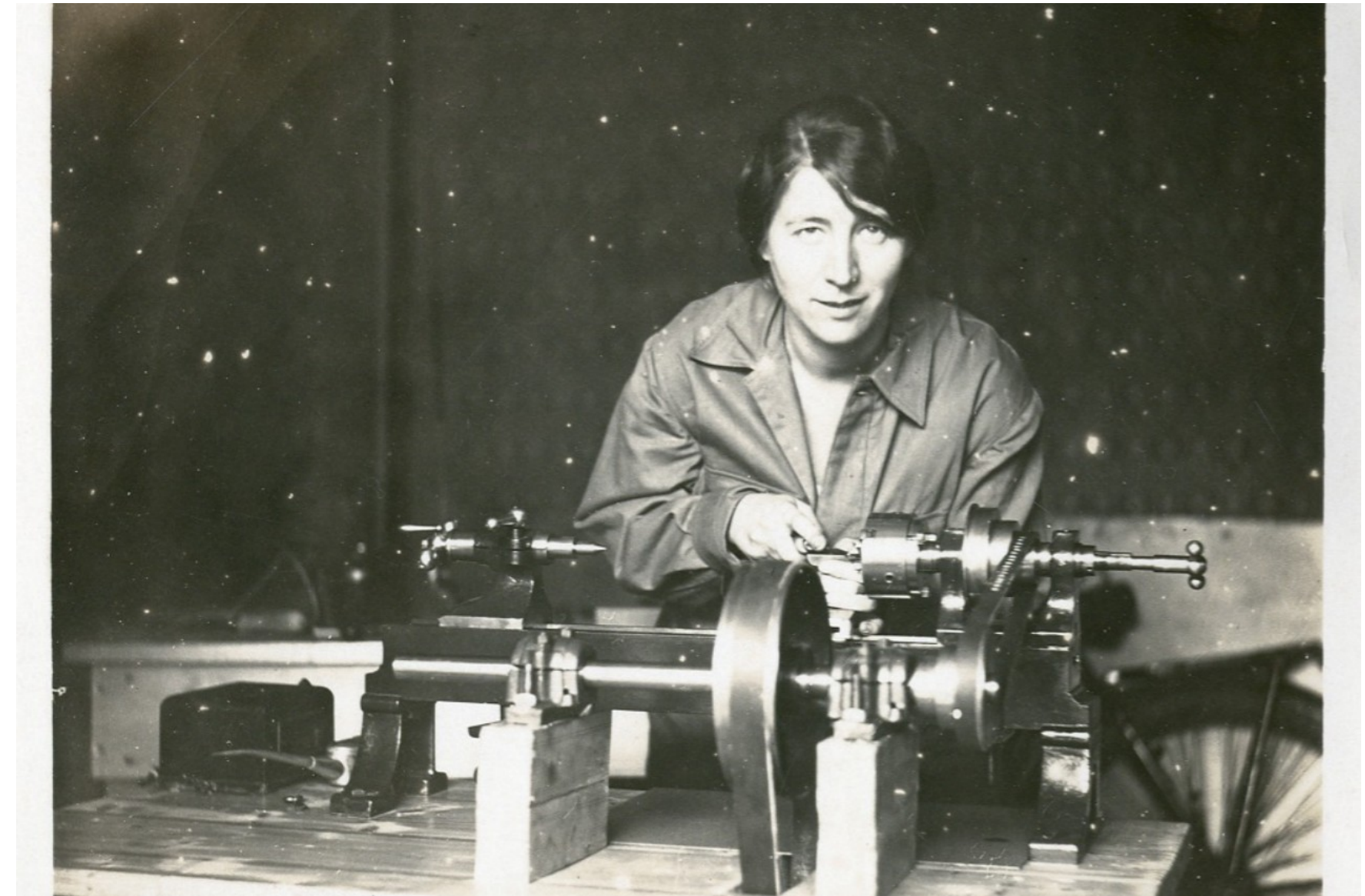
## We found a home in Caroline Bleeker Building

At the beginning of 2022, finding an ideal space for the prototyping lab took us a while. We are happy to have found a home in Caroline Bleeker Building next to the Jobshop and Scientific Instrumentation [1]. The location provided us with the inspiration for our name: Caroline's nickname used to be Lili. Her path as an entrepreneur, business owner, consultant, and instrument maker can serve as an inspiration for our students.

By clicking the link below, you can now also find us on Maps [2].

[1] <https://www.uu.nl/en/research/scientific-instrumentation/the-job-shop>

[2] <https://goo.gl/maps/3gFvw4MbDppLuKGa8>





## 2022 closes with a construction and remodeling phase

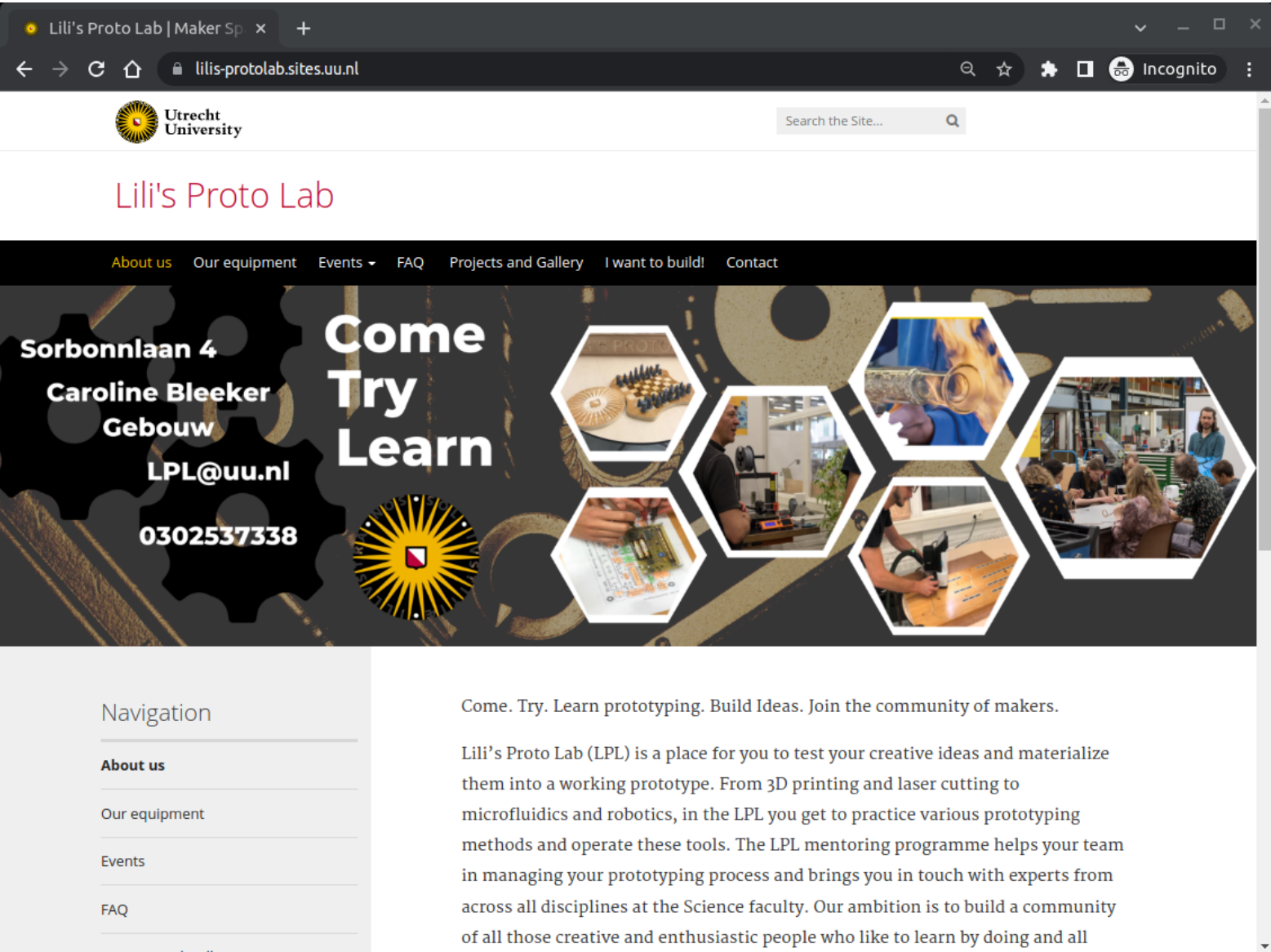
Lili's Proto Lab will be remodeled and modernized in Winter 2022/23. As a result, we had to pack up most of our equipment and temporarily store it in boxes. The grand opening day of LPL will be **March 8th, 2023**. Until then, our laser cutter and 3D printers remain operational in nearby rooms.



# Our presence on the web

Our new web presence is helping us be discoverable from within and outside the university. Our website serves as a central hub about LPL, including our mission, activities, and events [1]. We have a JOGL account to connect with other makers and share updates and resources [2]. In addition, we have a Twitter handle to share news and updates with a broader audience [3]. We also have a GitHub page showcasing our open-source projects and allowing others to contribute to our work [4]. Finally, we have a Mailman newsletter [5]. Overall, these web presences help us connect with our community and share our work with a broader audience.

- [1] <https://www.uu.nl/LPL>
- [2] <https://app.jogl.io/space/lpl>
- [3] <https://twitter.com/LilisProtoLab>
- [4] <https://github.com/LilisProtoLab>
- [5] <https://mailman.science.uu.nl/mailman/listinfo/lpl-news>







---

## Members



# Our team has materialized...

... and is comprised of three scientific staff members, two post-graduate coordinators, and a full-time lab manager.

**Dr. Sanli Faez**



**Drs. Lennart Herlaar**




**Jacob Seifert, MSc**



**Dr. Pauline Krijgsheld**



**Edward Paddon, MSc**



**Dr. Pieter Kooijman**





## Teaching & Courses

## Bio-Inspired Design Challenge - a Master's course of the GSLS

This course teaches students to design using the biomimicry design method. In the final report, they aim to inform designers and engineers how to materialize the biology or nature embedded in the design. Using the UN Sustainable Development Goals, students start by defining a problem and gradually work towards a proposed design solution. During this process, students are encouraged to make their choices as a group independently; they search for potential stakeholders and experts themselves.

At the end of the course, the 6 groups delivered a conceptual design embedded in a report, supported by a video pitch and live pitch, assessed by a jury. During this live pitch, all student groups could show a prototype or proof of concept or their initial ideas. For this, the Proto Lab has been both instrumental and encouraging. The winning team was awarded a small grant to take the next step in the prototype or a proof of concept design.

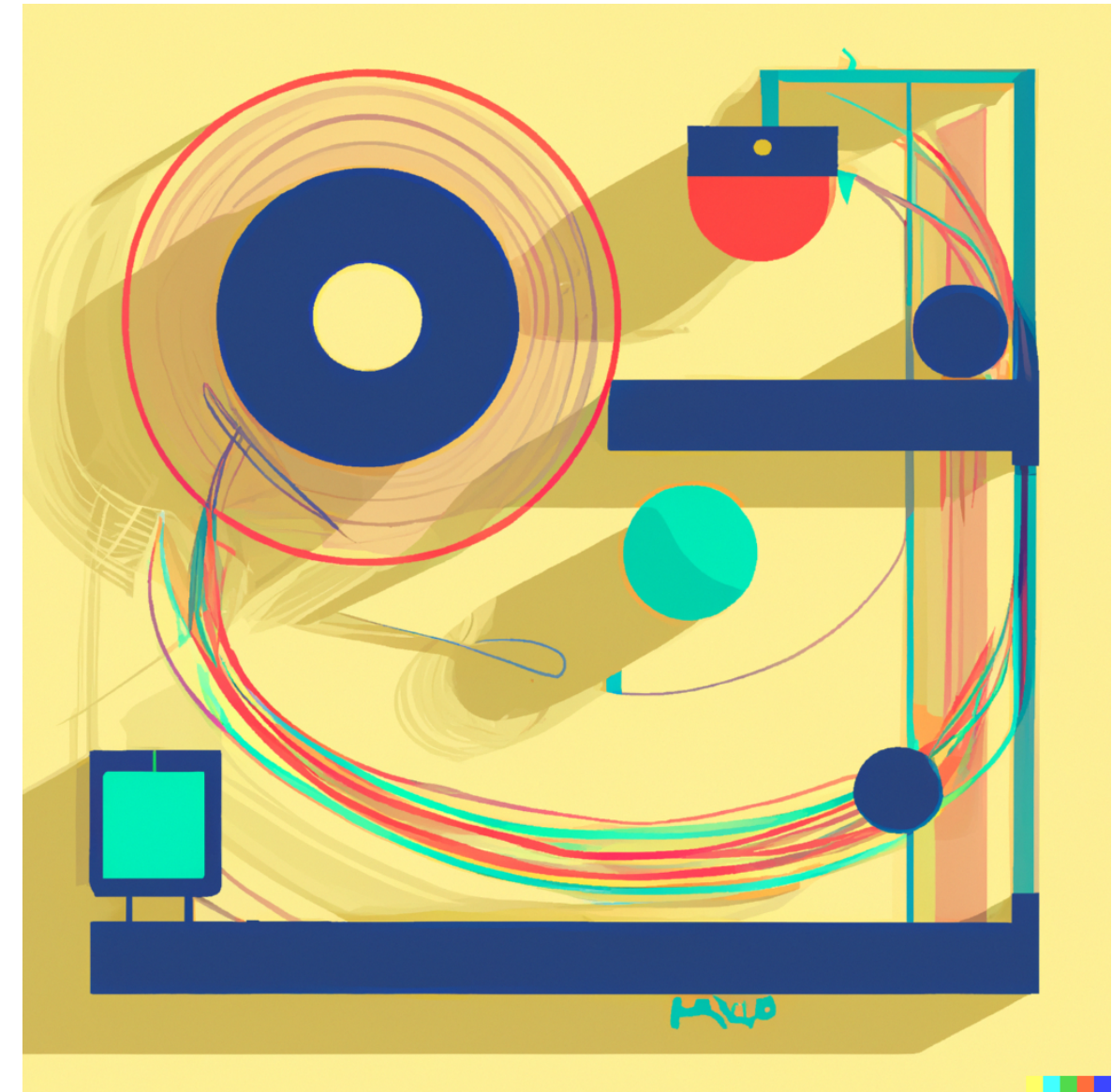




## Experimental design - Master's course of the GSNS Experiment Physics

In this course, students team up to build a hardware project with a research goal in mind. They need to build their setups from scratch in a short time of about four weeks. The Proto lab has been instrumental in making such rapid development possible. This year, a total of six experimental projects were realized. Executing these projects is an opportunity for the student to learn how to contribute to open and collaborative experimental research and enhance their interpersonal skills.

One successful project was **LiPaTrap**: a linear particle trap that is documented on <https://app.jogl.io/project/1508/LiPaTrap>





---

## Events



## Faculty Day workshop

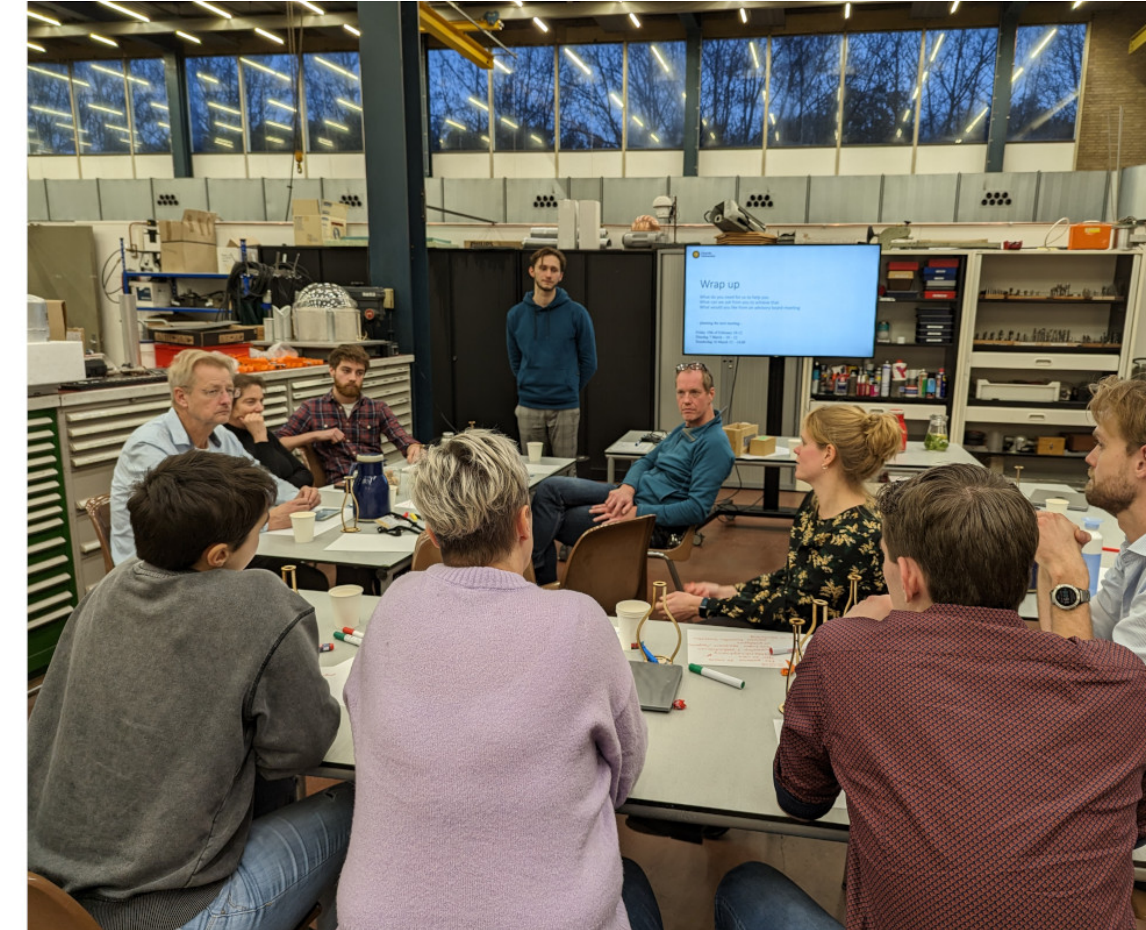
We hosted a Faculty Day workshop on July 5th using one of our first tools: the laser cutter. All workshop participants were invited to laser-cut a silhouette vase from plywood. We had more than 20 participants in total and just that many keepsakes in form of those stylish vases that could be taken home.





## Advisory Board Meeting

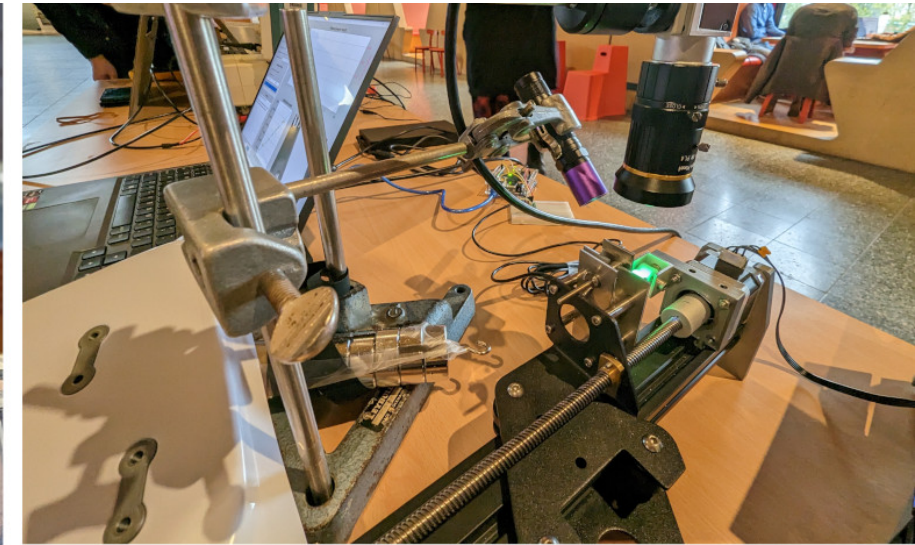
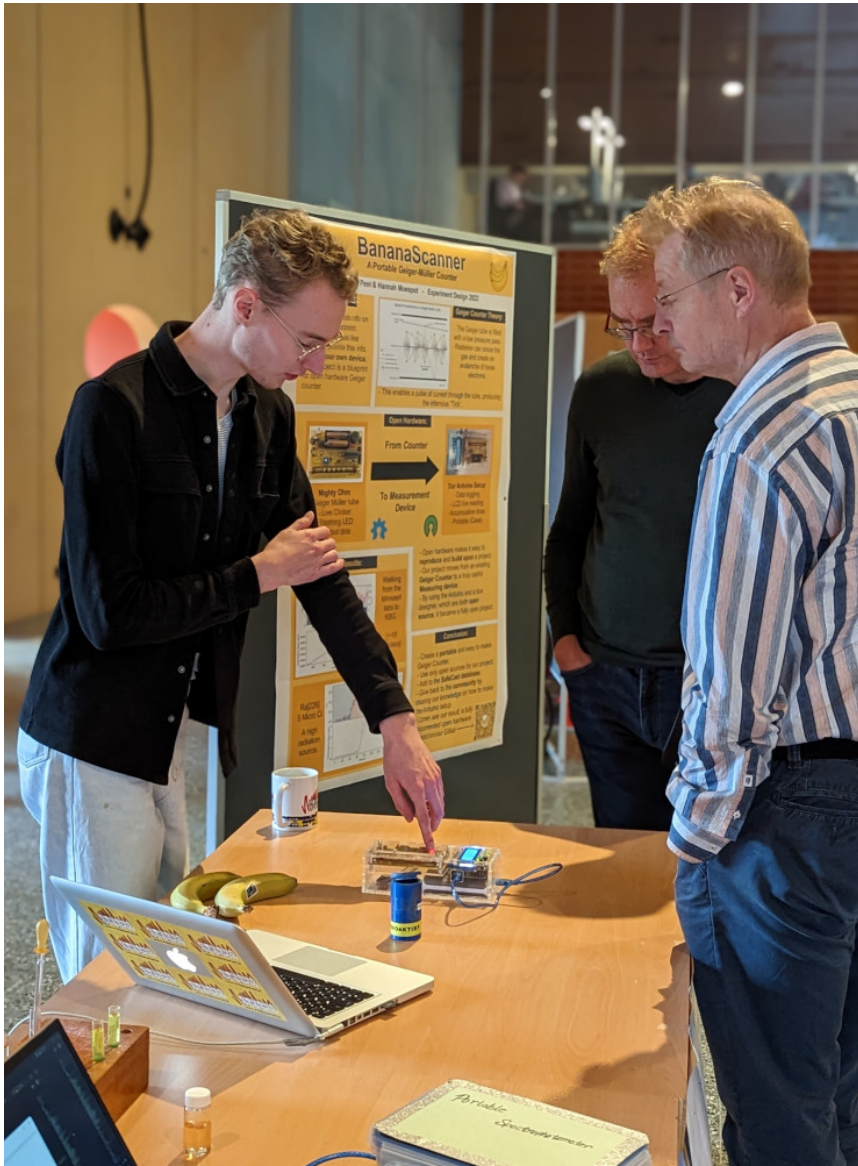
In November 2022, we celebrated our first advisory board meeting. The board consists of employees and students of Utrecht University, and will help us align and realize our teaching and outreach goals. At the first meeting, we were discussing relatively broad strategic questions such as community building, teaching, and how to orchestrate an interdisciplinary lab that needs to connect with all departments. Our next meeting is scheduled for Spring 2023.





# Celebrating the Experimental Design course

Also, in November 2022, the final presentations and demos of the course Experimental Design were held in Minnaertgebouw. We were impressed to see the creativity of the groups of students who built working prototypes quickly.





## \_\_\_\_ Projects



## 3D printers are at the heart of LPL

The assembly of our first FDM 3D printers was one of the first projects at LPL in itself. Today, we have a total of five FDM printers and one SLA printer operational. 3D printers are at the heart of a prototyping lab because they allow for the rapid creation of physical models and prototypes of designs. This can be particularly useful for testing the form, fit, and function of a design before committing to the time and resources to produce the final product. 3D printing also allows for creating complex geometries and custom parts that may be difficult or impossible to manufacture using traditional methods. This can help to speed up the prototyping process and reduce the need for multiple iterations of a design.





## The first ever prototype

This cube is our first eye-catcher and promotional material for our new lab. It is completely 3D-printed using different colored filaments. The photo of Caroline Bleeker has been converted into a height map such that diffuse light shining from the LEDs inside creates a 3-dimensional visual experience.

The project and STL files can be found here [\[INSERT JOGL LINK\]](#).



## Edward joins LPL with a chess board project

The chessboard combines the use of three different tools (and, thus, was a creative leap for Edward to start as a new member of LPL): 1. The AR-shaper for drilling the wood and producing the white chessboard fields, 2. The laser cutter to engrave the black fields, and 3. the 3D printers to print the chess pieces. The project and STL files can be found here [\[INSERT JOGL LINK\]](#).





## Present for the vice dean

Education works best when all the parts are working! We hope the vice dean feels inspired by our present to make all gears turn smoothly. For this design, we used the Shaper wood drill and laser cutter to cut and engrave the plexiglass. In the bottom of the wood a strip of LEDs is mounted. The project and SVG file can be found on JOGL: <https://app.jogl.io/post/2895>.



## Award for the bio-inspired design challenge

The bio-design students who used Lili's Proto Lab won the Bio-inspired design challenge. Here is a photo of them with the award we built. Credit to Nico and Pieter for doing the electronics, and thanks again to Lennart for supplying the LEDs.

The SVG file can be found on JOGL:  
<https://app.jogl.io/post/2896>.





## Whale Fin

The 3D whale fin is a project by Menno Bas, a student from the BioInspired Innovation track. His prototype uses a whale fin shape to create flow in a fish farming basin with minimal turbulence. At LPL, he used the vacuum former and laser cutter to create two opposing HIPS molds from a clay model, from which he cast a 3D silicone rubber fin prototype.

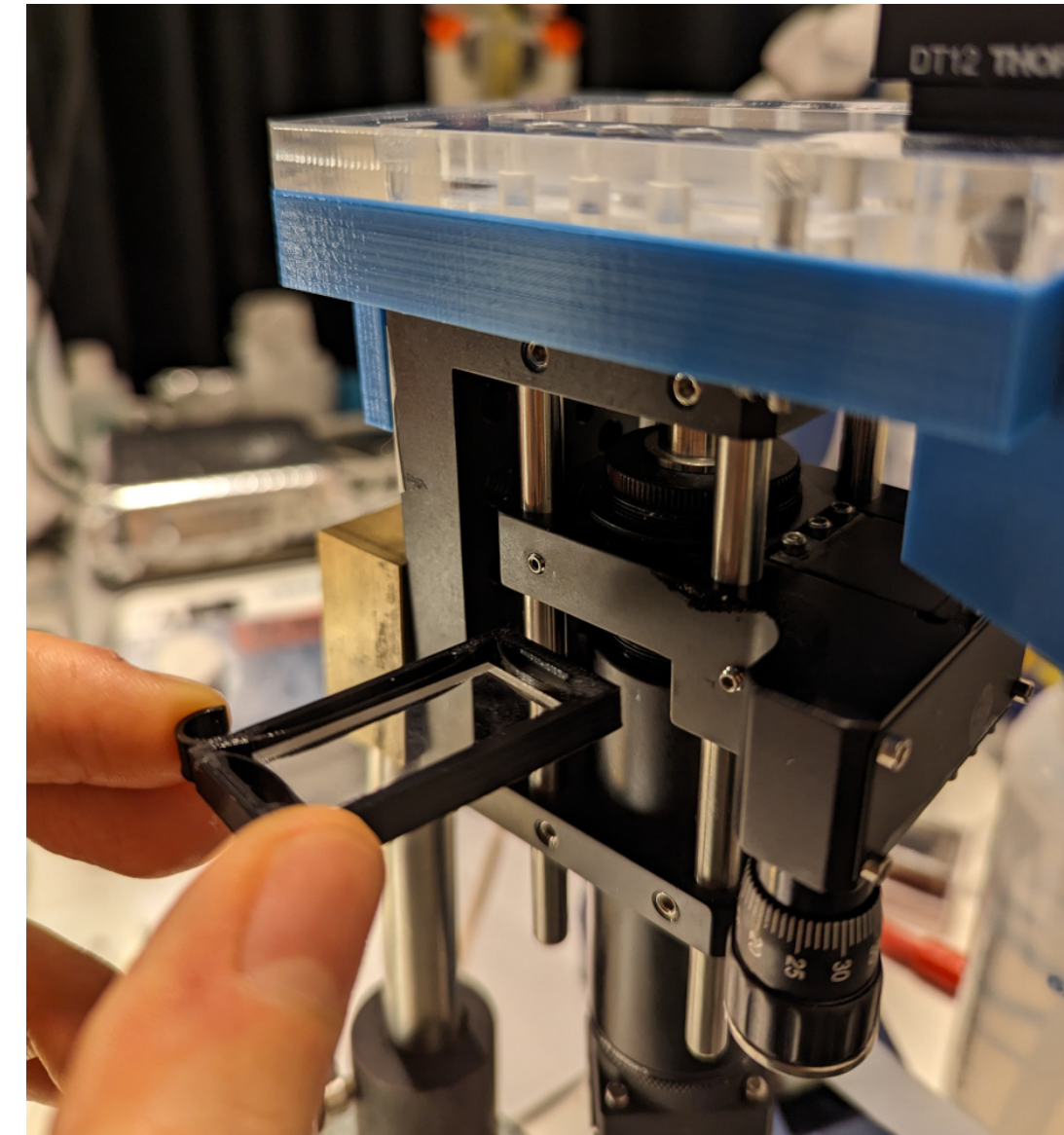




## Detecting particle distributions using light and AI

Jacob and Lotte are prototyping an optical particle detector for nano-sized particles in water. For that, they are building a dark field microscope and a data-driven pipeline to infer individual particle sizes using a deep neural network. The goal is to quantify the particle size distribution and exploit the fact that the astigmatic point-spread function of the microscope can be used to decode spatial information for each particle.

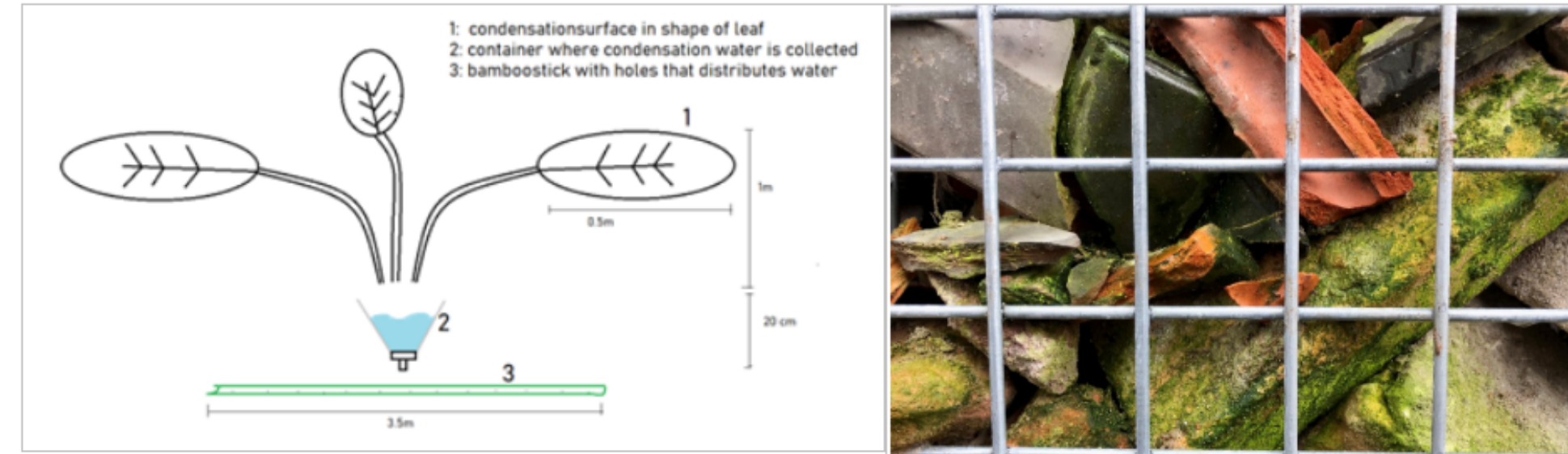
This project is documented on JOGL for further reading or contribution: <https://app.jogl.io/project/1176/ParticleDetector>.



## Bio-inspired Innovation Research Project

Masters Student Josh Hauser plan producing a field deployable plant incubator that aims to mimic the conditions in the site but with a 2-degree centigrade higher temperature. This is taking place under the support of the Utrecht botanical gardens and biology coordinator Martijn van Zanten. The challenge is finding a method that is scalable, responsive, and creates uniform heating in an uncontrolled environment. This will combine our lab's expertise, with computing, manufacturing, and biology being core components of the project.

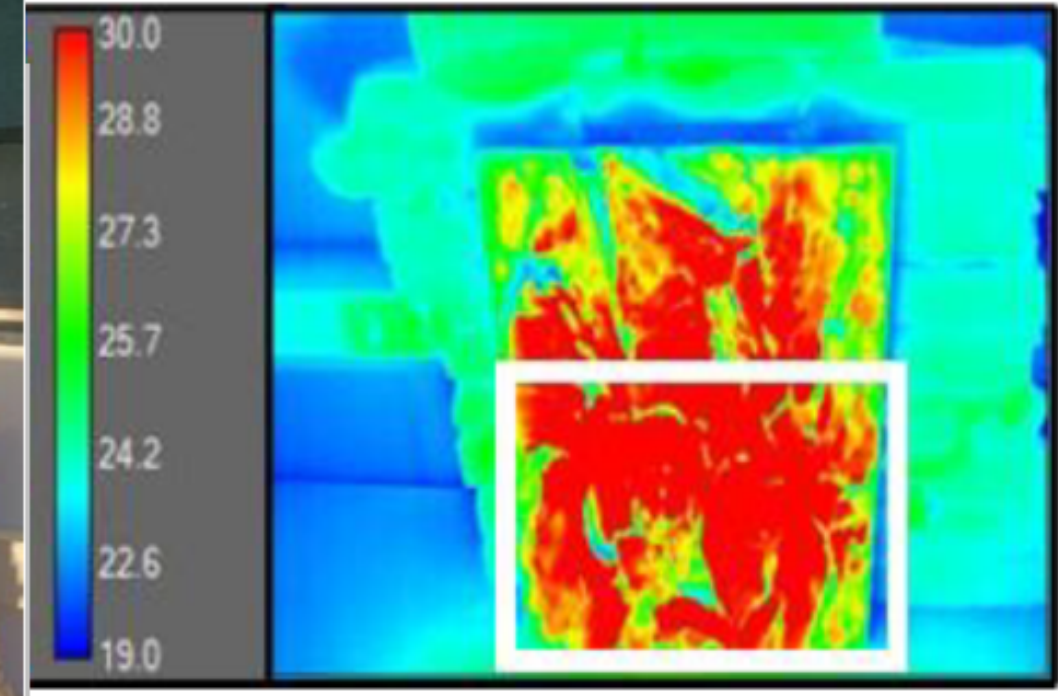
In addition to more traditional research methods, the Lili lab is now entering the Living Labs space. With support from Bio-Inspired Innovation lecturer Dr. Jaco Appelman, Masters student Armin Geluk is beginning to explore methods to draw down atmospheric water into bio-receptive (green) walls made of rubble. The project aims to build and test methods of water capture, channeling, and storage to create a more moist environment on the sunnier (and drier) sides of the circular parking garage living lab.





## Insubark 2022

Insubark is an award-winning team from the Bio design course, a course that uses bio-inspiration to tackle sustainability issues as described by the SDGs. Insubark created a panel that maintains a cooler surface than its surroundings to be used to reduce the urban heat island effect. As winners of the bio-design challenge, they will have access to 2000 euros to develop their prototype within the Lab.





## Cyanoshade 2022

Cyanoshade used bioutilisation to incorporate biophilia into their sunshade. This design fits into conventional sun blind slots but blocks the sun using photosynthetic cyanobacteria. This can prevent the heat from reaching the user but also baths the user in a gentle green light, shown to reduce stress. By reconnecting the user with nature, Cyanoshade also helps to bridge the disconnect between people and the environment.



## **Lastly, two upcoming projects in the works...**

### **Amno 2023**

The winner of last year's Bio design challenge are also getting involved in our Lab. The group designed a biomimetic air filter that can be added to lamp posts and hanging baskets in cities to reduce levels of toxic PM 2.5 and 5 molecules.

## **Communication profile 2023**

The Lab has created an application to take on students from the communication profile starting in September 2022. The profile has students investigate the case of the organization they are involved with and create communication products to help the organization reach its potential users. However, the Lili lab also offers a twist by offering the communication product to be a physical prototype product.



## \_\_\_\_\_ Supplementary



**List of events**

- 05.07.2022, Faculty Day, laser-cutting workshop
- 25.07.2022, Prusa 3D printer assembly session
- 03.11.2022, Presentations of *Experimental Design* prototypes
- 23.11.2022, LPL advisory board meeting
- 20.12.2022, UU-employee labtour to HCC and LPL



## Thanks to...

Annemiek Pronk  
Ard Spidsbaard  
Christina Verver-van Ek  
CMD maker space at HU  
Dante Killian  
FSC Utrecht University  
Han Wosten  
Hannah Moespot  
Henk-Jan Akkerman  
Irma Vermeend  
Judith Masthoff  
Klaas Druif  
Lotte Polling  
Lisa van Dijk  
Machiel van der Grift  
Margot Koster

Nico van Hijningen  
Otto van de Beek  
Peter van der Straten  
Quinten Kleijnen  
Rens Voesenek  
Sander Deelen  
Sigrid Jansen  
Stefan Vandoren  
Stefan van Deelen  
Willem Huijgens  
Yaran Kaarsemaker